



19 Canterbury Road, Brynmill, Swansea, SA2 0DD

£205,000

Video tour available NO CHAIN

We are pleased to bring to the market a three bedroom middle terrace property situated in the popular location of Brynmill. Within five minutes walking distance to local primary schools, parks, sea front and Singleton Campus. Close to local amenities, restaurants and bars in the vibrant Uplands district. Great transport links Swansea City Centre, Singleton University, Singleton Hospital and local beaches.

The accommodation comprises to the ground floor a porch, hallway with staircase leading to the first floor, living room, sitting room and kitchen. To the first floor you will find three bedrooms with beautiful views of Singleton Park from the rear bedroom and bathroom. To the lower ground floor they is a large storage room, WC and utility room with door leading to the enclosed rear garden with rear access. To the front of the property there is a garden with decking area and steps leading down to a lawned and gravelled area.

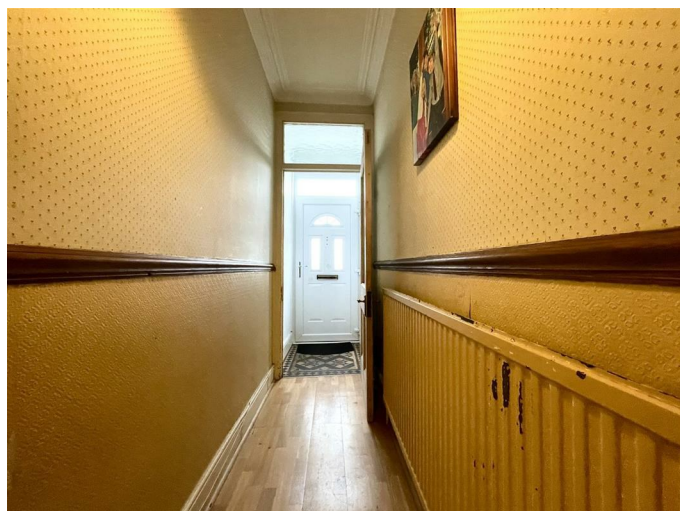
The Accommodation Comprises

Ground Floor

Porch

Entered via front door, tiled flooring.

Hallway



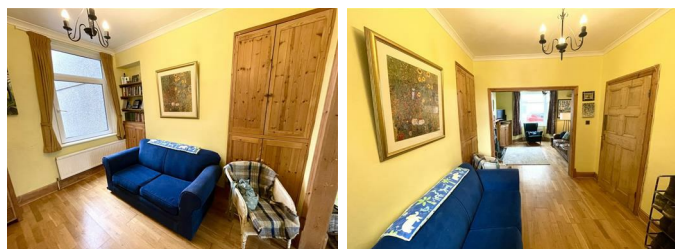
Staircase leading to the first floor, engineered wood flooring, radiator.

Living Room 11'3" x 11'9" (3.44m x 3.59m)



Double glazed bay window to front, working fireplace with tiled and wooden surround. Open plan to the sitting room, engineered wood flooring, radiator.

Sitting Room 9'4" x 9'0" (2.84m x 2.74m)



Double glazed window to rear, engineered wood flooring, radiator.

Kitchen Area 18'8" x 9'1" (5.70m x 2.77m)



Fitted with a range of wall and base units with worktop space over, 1+1/2 bowl sink unit, integrated dishwasher, built in electric cooker with gas hob, space for fridge/freezer. Two double glazed windows to side and rear with views of Singleton Park, vinyl flooring, radiator.

First Floor

Landing

Access to loft, fitted carpet.

Bedroom 1 10'0" x 15'4" (3.05m x 4.68m)



Two double glazed windows to front, fitted carpet, radiator.

Bedroom 2 10'7" x 9'2" (3.23m x 2.79m)



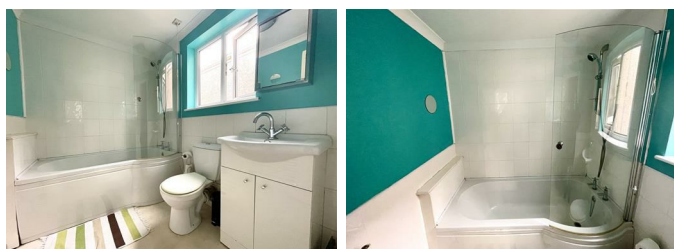
Double glazed window to rear, storage cupboard, laminate flooring, radiator.

Bedroom 3 18'8" x 9'1" (5.70m x 2.77m)



Double glazed bay window to rear with beautiful views of Singleton Park, storage cupboard, fitted carpet, radiator.

Bathroom



Fitted three piece suite comprising; bath with shower over, wash hand basin and WC. Double glazed window to side, vinyl flooring, heated towel rail.

Basement

Inner Hallway

Staircase leading to basement, open plan to utility room.

Store Room

Store room with power and light.

Utility Room 19'8" x 9'1" (5.99m x 2.77m)

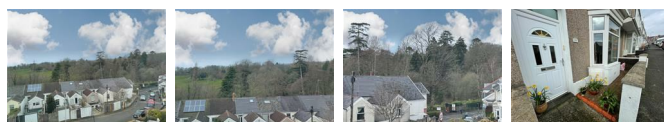


Plumbing for washing machine, sink with draining board, two double glazed windows to side and rear, door leading to rear garden.

WC

Frosted double glazed window to rear, fitted with WC, radiator.

External



To the front of the property there is a walled forecourt.

Rear Garden



To the rear of the property there is an enclosed garden with decking area and steps leading down to a lawned and gravelled area. Rear access.

Tenure

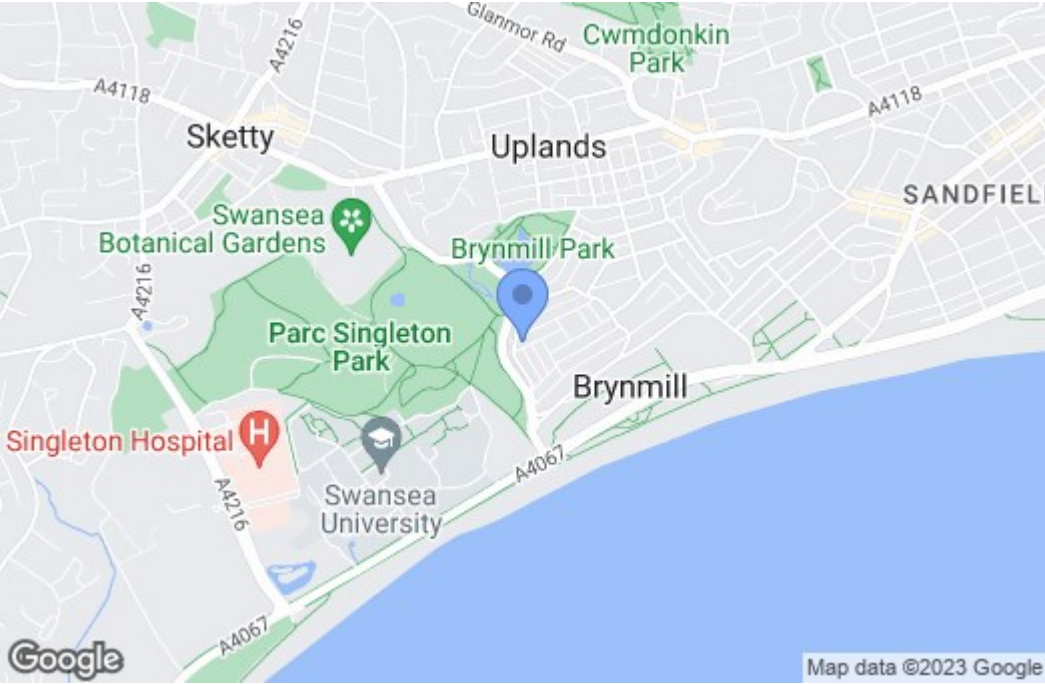
Freehold

Council Tax – D (2022/2023 - £1782.44 MIN)

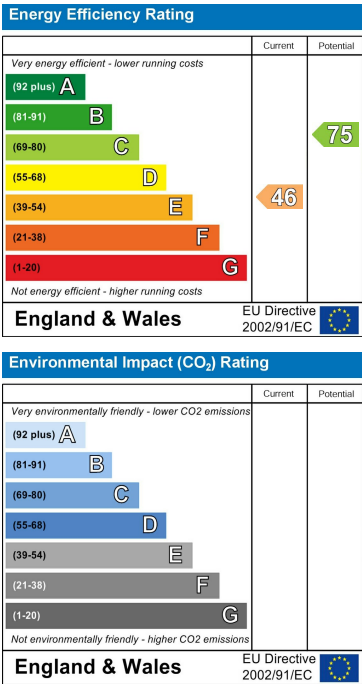
Floor Plan



Area Map



Energy Efficiency Graph



These particulars, whilst believed to be accurate are set out as a general outline only for guidance and do not constitute any part of an offer or contract. Intending purchasers should not rely on them as statements of representation of fact, but must satisfy themselves by inspection or otherwise as to their accuracy. No person in this firm's employment has the authority to make or give any representation or warranty in respect of the property.